



FST-112D Dual High Voltage Tester ***FST-114Q Quad High Voltage Tester***

Fast and Efficient!

Fast, Faster, Finero HiPot!

Finero's **FST-112D Dual HiPot** and **FST-114Q Quad HiPot** lift testing speed and production output to a completely new level. **FST-112D Dual HiPot** and **FST-114Q Quad HiPot** perform Dielectric Withstand (HiPot) tests for 2 or 4 channels simultaneously thus enabling a double or quadruple performance with much lower costs than with traditional HiPot systems.

FST-112D Dual HiPot and **FST-114Q Quad HiPot**, when used in connection with Finero's simple to use and effective Safetest 100B quality control software makes building high performing functional test systems cost efficient and fast.

Dual HiPot and Quad HiPot main features are:

- Simultaneous dual or quad channel high speed measurement
- Very quick calibration with exchangeable measuring module
- A very sensitive and adjustable partial discharge detector
- Reliable mA level measurements
- Interfaces USB, Ethernet, RS232, GPIB
- LabVIEW drivers available

FST-112D Dual High Voltage Tester

FST-114Q Quad High Voltage Tester

Applications

FST-112D Dual HiPot is used mainly in medium and high volume production where output performance is critical. Due to its dual channel simultaneous measurement capability production output can be doubled with much lower cost than using two single HiPot testers. **FST-112D Dual HiPot** also simplifies substantially building test systems in cases when simultaneous synchronized testing is required.

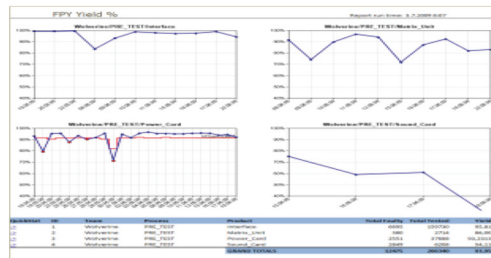
FST-112D Dual HiPot is very fast, when needed, in testing and saving the test data, which makes it an optimum safety tester for very high volume production.

Optionally available **FST-114Q**, four channel HiPot tester, simultaneously tests and retrieves and saves test and measurement data of all 4 channels.

The outputs are floating against the ground in both **FST-112D** and **FST-114Q**.

FST-112D Dual HiPot ideal applications are for instance in high volume production quality control of:

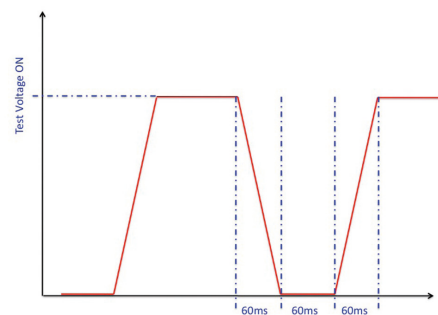
- Power supply testing
- Filter testing
- Cable harnesses testing
- Any production that has high requirements for production output



FST-112D Dual HiPot as an Ultra High Speed Test System

Dual HiPot's and Quad HiPot's exceptional high speed (see the diagram) allows to build ultra high speed high volume production test lines.

This diagram shows how fast the test cycle can be. With minimum test time of 1sec the overall test cycle time is 1.18sec only. And this for both channels.



The **FST-112D Dual HiPot** and **FST-114Q Quad HiPot** can be combined with other FST-safety tester line products, like leakage current tester FST-140 and the Relay Matrix FST -150. By using the available LabVIEW driver for FST-line equipment, it can be used for building test systems by utilizing for instance other LabVIEW compatible measurement modules either from Finero or from a wide variety of suppliers.

FST-112D Dual High Voltage Tester

FST-114Q Quad High Voltage Tester

Reliability in Quality Control

In production quality control the reliability of test equipment plays a crucial role. A failure in test equipment can potentially cause a major production bottleneck. In terms of measurement accuracy and reliability the quality control test equipment must deliver superior performance. Finero has provided the world wide electronics and electrical industry with reliable and accurate safety testers and functional test systems for over several decades.

The **FST-112D Dual HiPot** and **FST-114Q Quad HiPot** make no compromise to this commitment of reliability and accuracy.

Technical Specification	
Input	230V AC or optionally 115V AC; 50Hz / 60Hz; 650VA
Output	Range: 0 - 2500V AC or 0 - 5000V AC
Optional	DC output
Maximum test current	20mA
Optional	100mA on request
Measurements	True RMS for I and U
Accuracy	± 0.5% from the range plus 5 digits
Analog Display	± 2% from the range
Measuring Ranges	
Standard	2mA / 20mA per channel
Optional	10mA / 100mA per channel on request
Timer function	OFF or 1 - 60s, 0.1s steps
Ramp function	Ramp up and/or down
selectable range	5 - 30s, No ramp = 60ms
Partial discharge detector	OFF or relative sensitivity adjustable 1...100
External connections	
Input 24V DC	Start, Stop, External safety loop, 2 programmable inputs
Output, closing relay	Test On, Test Failed
Output, change over relay	Discharge
Output NPN 24V DC / 100mA	2 programmable
Auxiliary power	24VDC, max. 100mA
Interfaces	GPIB, Ethernet, RS-232, USB
Dimensions	483mm x 410mm x 148mm (w x d x h)
	Rack19", 3U, 133mm without feet
Weight	23kg

FST-112D Dual High Voltage Tester

FST-114Q Quad High Voltage Tester

Other features are:

- Low and High limits for each acceptance parameter
- 19" rack mounting kit included
- Automatic DUT discharge output to control external discharging circuit
- Safety loop input to prevent dangerous testing if loop open

- ✓ **Ultra High Speed**
- ✓ **Superior Performance**
- ✓ **High Accuracy**
- ✓ **Increased Throughput**
- ✓ **Cost Saving**



ORDERING INFORMATION

Product Name	Art. No.
FST-112D Dual HiPot	5787
FST-114Q Quad HiPot	5791
Additional Measuring module for FST-112D	5788

All specifications are subject to change without notice